

The Edgcombe Group, Inc.

Landscape Improvement to Brookside Gardens and Nature Reserve Park

Client:
Maryland National Capital Park & Planning Commission

Location:
Wheaton, Maryland

Point of Contact:
Bill Payton,
Project Manager

- Project Features:**
- ▶ Nature Trail
 - ▶ Elevated Board Walk
 - ▶ Ornamental Landscaping
 - ▶ Environmental Assessment
 - ▶ ADA Accessibility Standards
 - ▶ Coordination with existing Water Feature

- The Edgcombe Group, Inc.'s Role:**
- ▶ Landscape Architecture
 - ▶ Schematic Design
 - ▶ Preliminary Environmental Assessment
 - ▶ Public Improvements

Completion Date:
1997-1998

Project Setting:
Wooded Nature Reserve

Project Size:
5 Acres

Project Construction Cost:
\$300,000

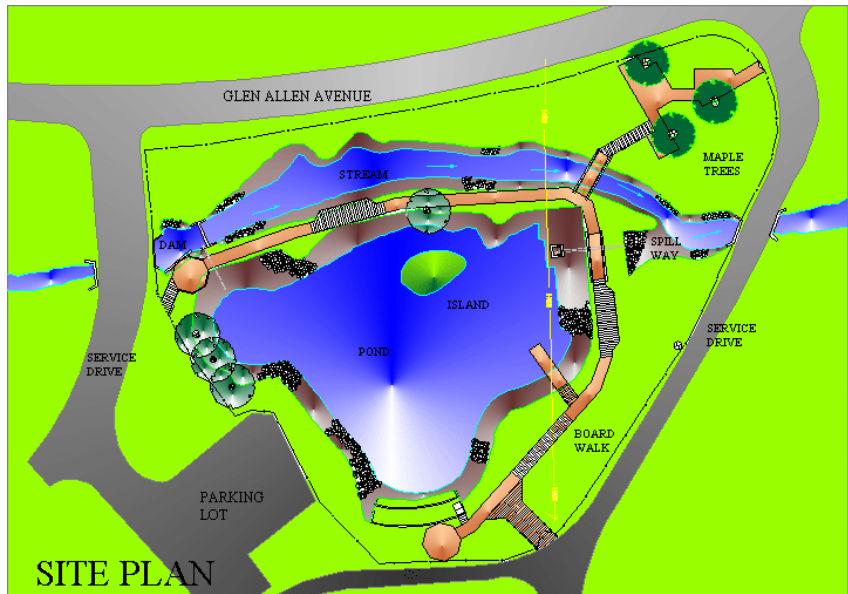
Key Personnel:
Leland Edgcombe, ASLA
Principal-in-Charge, Senior Landscape Architect

Ralph Belton, RA,
Mapping / CAD Manager

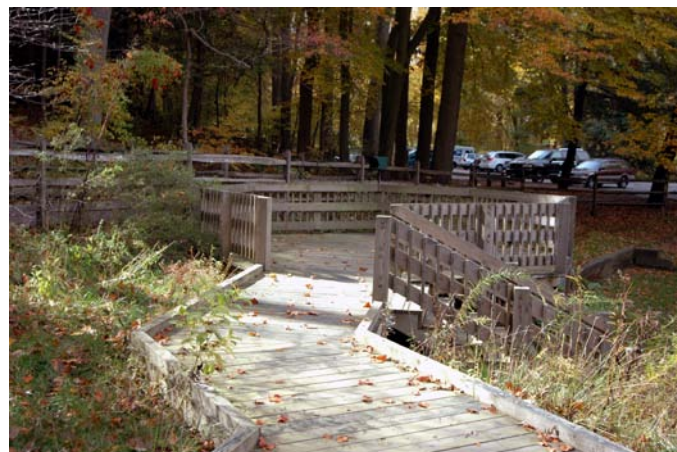
This project included the addition of a nature trail, handicap accessibility, elevated wooden walkways, and two (2) pedestrian bridges over water features to connect the nature pond wildlife conservancy with the arboretum and its associated parking lots.

There are two entrances to the pond area with wide gates to conveniently receive all visitors. The visual image and accessibility of the pond's perimeter is extremely important, especially in creating an initial impression for the many first-time visitors.

The highly visible location of the pond, coupled with the proposed railway & walkway conveniences, have made this park an ideal area for the public to regularly interact with the native wildlife features.



Illustrative Site Plan of Proposed Nature Center Improvements



Nature Trail with Observatory



Existing Nature Pond



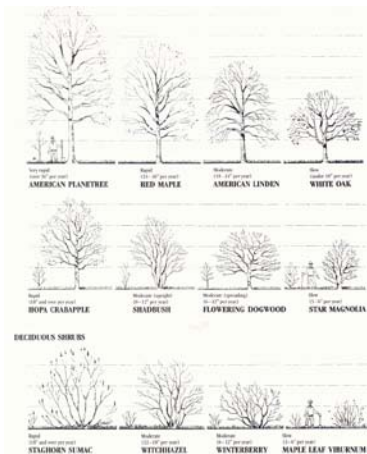
Existing Park Entrance



Nature Trail with Observation Deck between Existing Creek and Pond



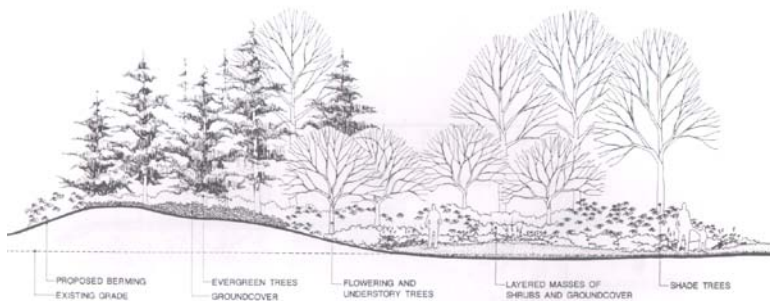
Selection Chart of Conifers and Evergreen Trees and Shrubs.



Selection Chart of Deciduous Trees and Shrubs.



Nature Trail with Pedestrian Bridge over Creek to Maple Sugar Harvesting Area.



Bio-Diversity to Include an appropriate mixture of overstory as well as understory plants in a naturalized setting. Landscaping offered a seasonal variety of native shrubs and perennials.