

The Edgcombe Group, Inc.

United States Department of the Air Force Campus Park and Landscape Plan

Client:



U.S. AIR FORCE

Location:

Metropolitan Washington, D.C.

Point of Contact:

Ronisha Hodge,
Project Manager, Asset Management Flight

Project Features:

- ▶ Active and Passive Recreation Facilities
- ▶ Localized Park Enhancements
- ▶ Ornamental Landscaping
- ▶ Phasing
- ▶ ADA Accessibility
- ▶ Cost Estimations

The Edgcombe Group, Inc.'s Role:

- ▶ Landscape Architecture Design Standards
- ▶ Landscape Specialties
- ▶ Public and Pedestrian Improvements
- ▶ Campus Improvements

Completion Date:

2011 (Design)

Project Setting:

Military Installation

Project Size:

12 Acres

Project Cost:

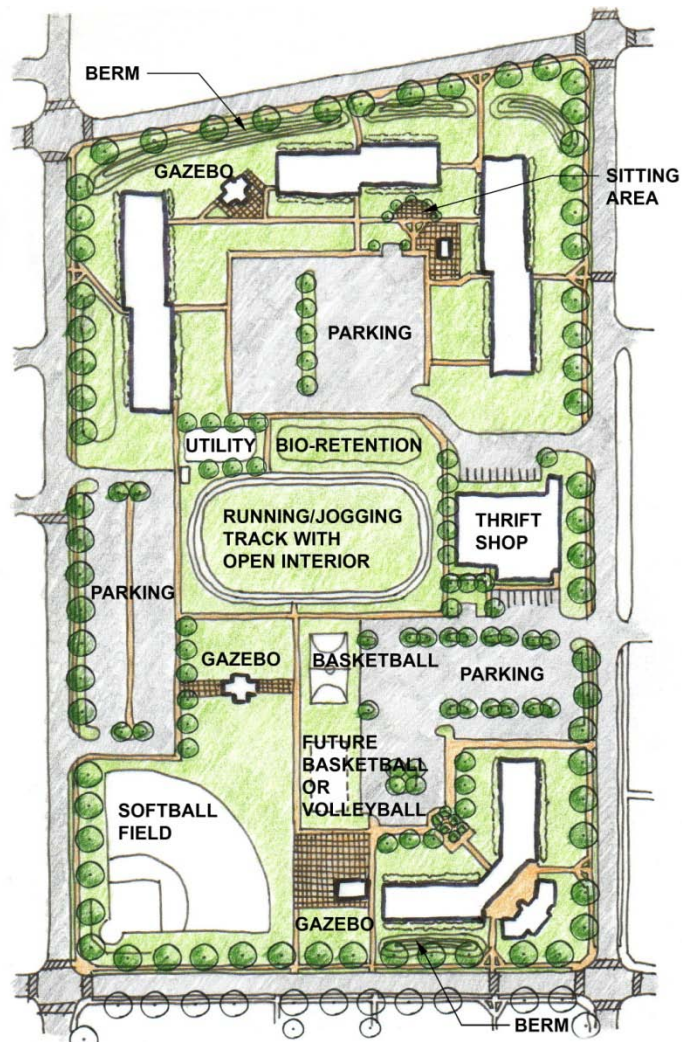
\$4,500,000

Key Personnel:

Leland Edgcombe, AIA, ASLA
Principal-in-Charge, Senior Landscape Architect

The overall planning strategy will lay the groundwork to implement the vision of a 12-Acre Dormitory Campus Area Development Plan. This plan will help define the campus as a desirable space during the 10-15 year transition to the future campus as previously envisioned by the Air Force Base Dept. of Community Planning. The goal is to develop a phasing plan for the campus improvements to enable execution by discrete projects in a manner that provides optimal benefit to the quality of life and functionality of the campus.

Tasks included the design and selection of state-of-the-art site furniture, improving general accessibility of the site regarding pedestrian circulation and handicap access, providing a series of recreational facilities complementing the dormitory buildings, incorporating native plant material, and improving the overall usability of the site by the local service men and service women.



North Campus Landscape Improvement Plan

Megan Ukoh
 Mapping / GIS / CAD Manager
 Landscape Architecture

Wilfred Lewis
 Design Architect



Basketball and Beach Volleyball Improvements



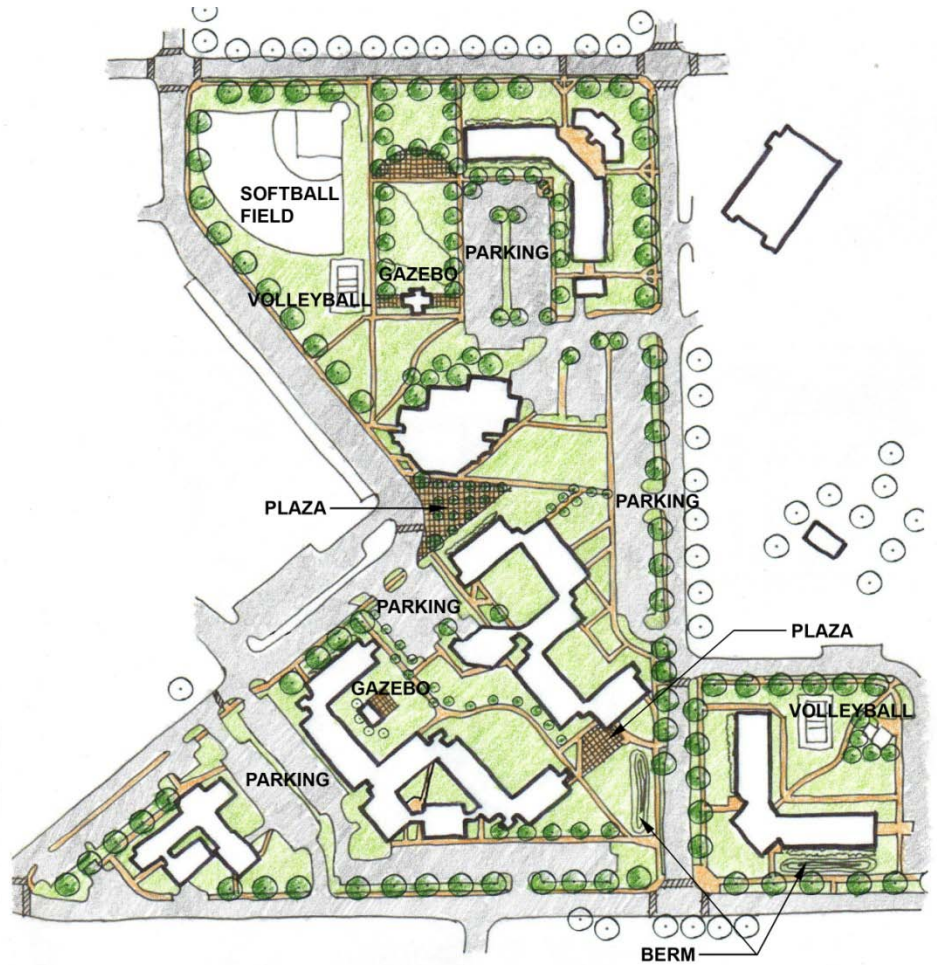
Baseball Field with Campus-Wide Improvements



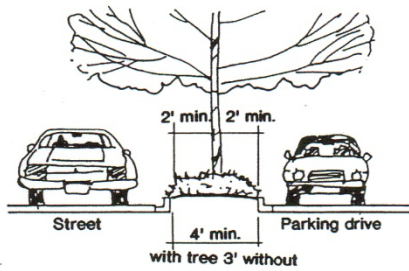
Multi-Purpose Game Field with Bio-Retention Facility Nearby



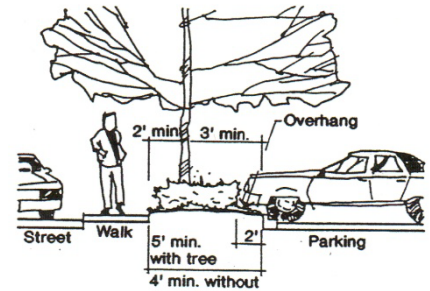
Campus Picnic Pavilion Adjacent to Dormitory Buildings



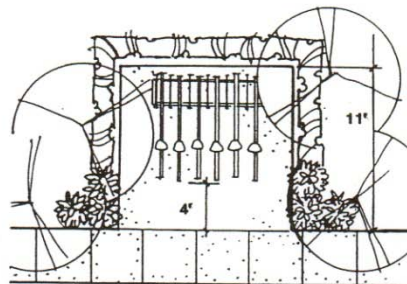
South Campus Landscape Improvement Plan



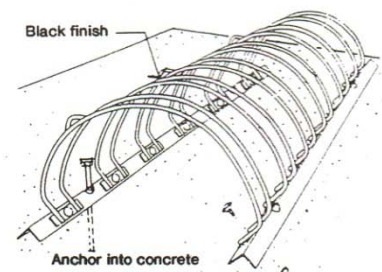
Buffer Without Overhang



Four Or Five Foot Buffer



Sketch Of Bike Rack Layout



Landscape and Urban Design Standards