

The Edgcombe Group, Inc.

Petworth Playground Design Improvements and Spray Park

Client:

The District of Columbia, Dept. of Parks and Recreation

Location:

Washington, D.C.

Point of Contact:

Bridget Stesney, David Janifer
Project Managers

The Petworth Recreation Center Landscape Design Improvements is in response to the request from the Client to provide a new and safe playground for toddlers (2-5 years) and school-age children (6-12 years). Tasks included the design and selection of state-of-the-art playground equipment, improving general accessibility of the site regarding pedestrian circulation and handicap access, community engagement and workshops, providing a series of functional spaces complementing the playground, incorporating native plant material, and improving the overall usability of the site by the local community.

Project Features:

- ▶ Passive Recreation Facilities
- ▶ Localized Park Enhancements
- ▶ Ornamental Landscaping
- ▶ Playground Design
- ▶ ADA Accessibility
- ▶ Irrigation System
- ▶ Site Lighting Upgrades

The Edgcombe Group, Inc.'s Role:

- ▶ Landscape Architecture
- ▶ Public Improvements

Completion Date:

2007

Completion Schedule:

On Time

Project Setting:

Urban Park

Project Size:

2 Acres

Project Cost: On Budget

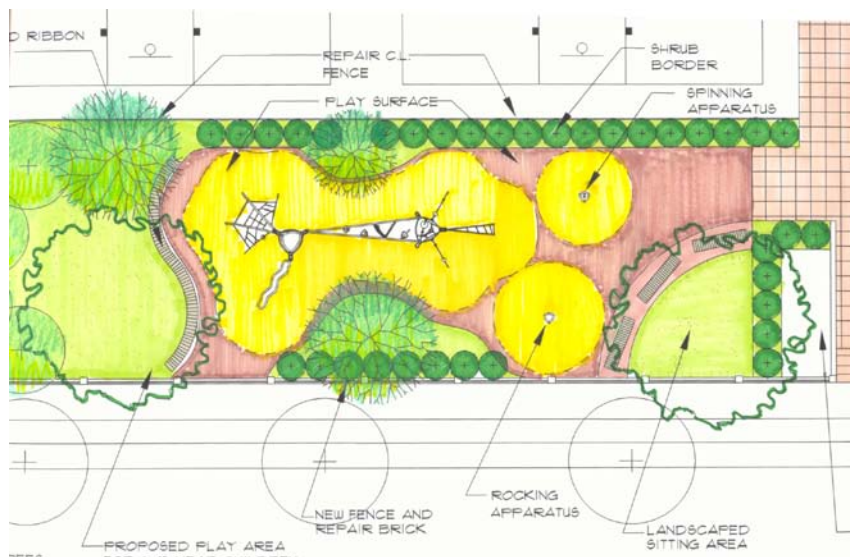
\$700,000

Key Personnel:

Leland Edgcombe, ASLA
Principal-in-Charge, Senior Landscape Architect

Wilfred Lewis

CAD Operations / Playground Design and Planning



Schematic Design and Layout of age 6-12 year Playground Apparatus



Installation of State-of-the-Art Playground Apparatus for ages 6-12



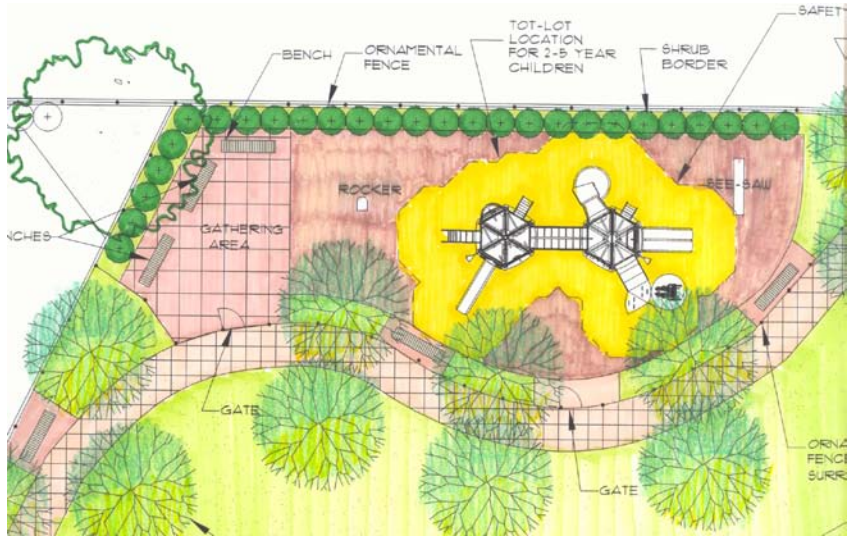
Existing Spray Park in Considerable Disrepair



Existing Limited Play Features



Petworth Park Featured in Playground Equipment Manufacturer's 2008 Catalogue



Schematic Design and Layout of age 2-5 year Playground Apparatus



Installation of Playground Apparatus for ages 2-5



Installation of Spray Park with Interactive and Automated Features.